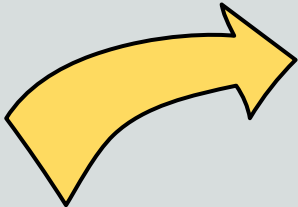
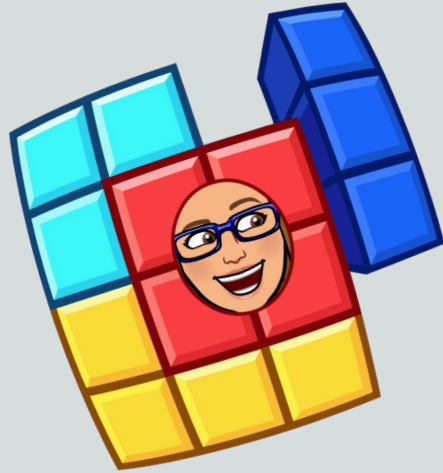


My Knowledge of Google Sites

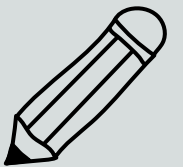


Select a color cube based on your comfort level:

Red = Novice, not much experience

Yellow = Proficient, some experience

Green = Exemplary, looking for more information

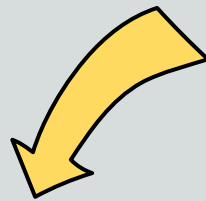
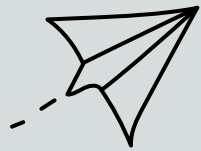


Up Your Game with Google Sites

May 10, 2023

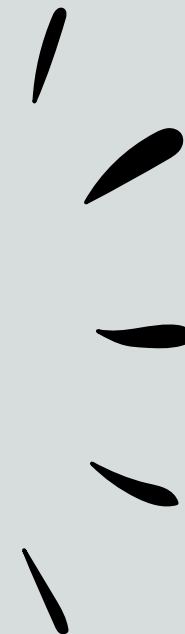
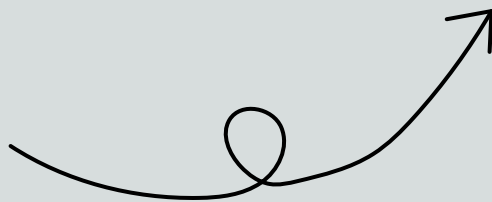


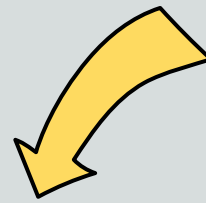
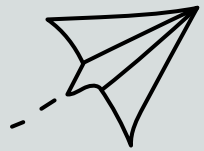
← Scan Me for the slides!



HELLO! I'm...

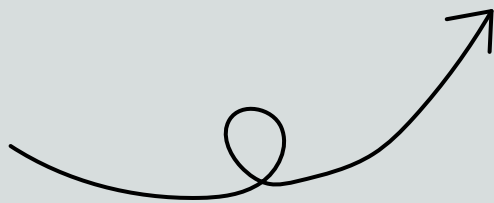
Tiffany Bucko
K- 5 Instructional Technology Specialist
Lyme - Old Lyme Public Schools

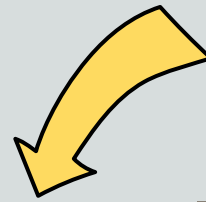
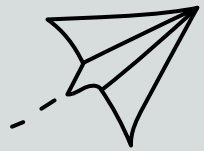




HELLO! I'm...

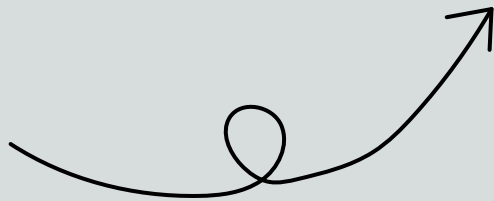
Nila Kaczor
Gifted & Talented w/ Enrichment & 4/5 STEAM Teacher
Lyme - Old Lyme Public Schools





HELLO! I'm...

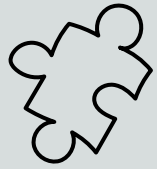
Lucy Trost
Library Media Specialist
Lyme - Old Lyme Public Schools



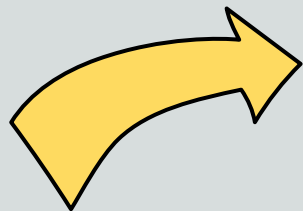
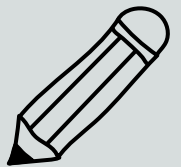
Why Google Sites?

asdfghijkl;
kvjiad
ilkdf

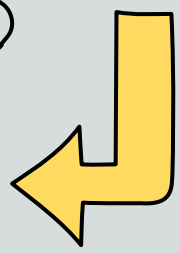
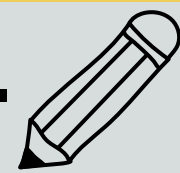
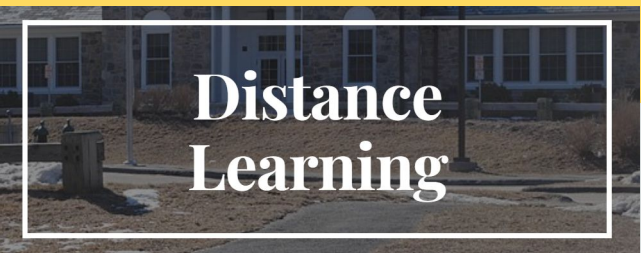
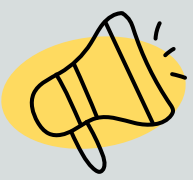




What are Google Sites?



Welcome to- Lyme School



ILLUMINATE



The Midwest region does lot's of farming

The Midwest region is one of the most important farming places in the united states! It also has a long growing season which is good for growing crops!



It has a huge Manufacturing Industry

It makes lots, from cars to truss, to steel to deck. It does design service, and has a project center too.



Did you know about the belts?

There are 3 different kinds of belts in the Midwest region, the Corn Belt, the Wheat Belt, and the Dairy Belt.



Corn belt

The **corn belt** is in the great planes and hardly covering **western Indiana, Illinois, Iowa, Missouri, eastern Nebraska, and eastern Kansas.**



Wheat belt

The **wheat belt** is in great planes and is the dominant crop.

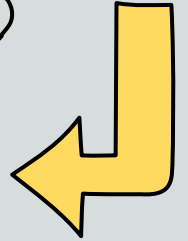
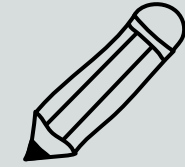


Dairy belt

The **dairy belt** is in the great planes and includes **cows goats and sheep.**



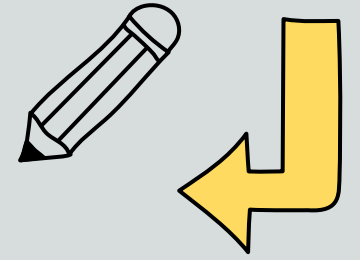
Student Research & Projects



Home Sports Teams Economy Landmarks Climate States and Capitals

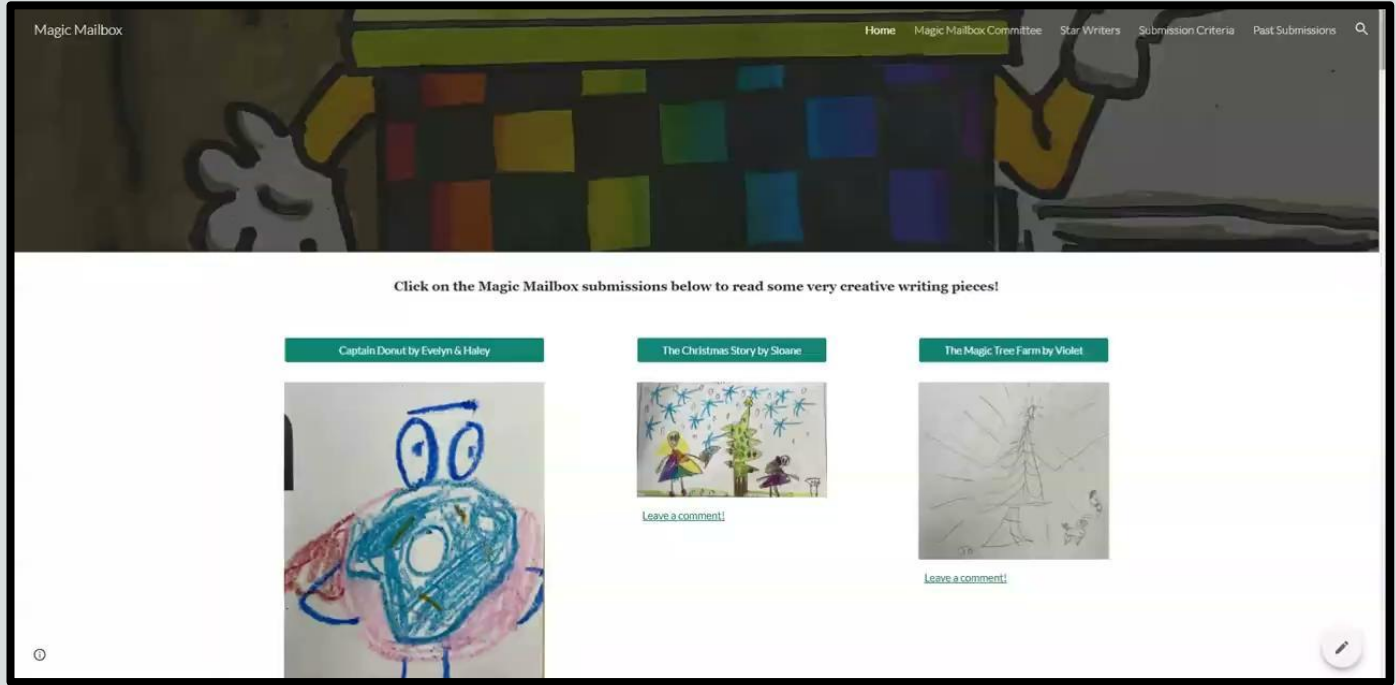
- **Regions' Project- Website Design**
- **Research- Graphic Organizer**
- **Planning Page/ Purpose**
- **Structure of Website Design**
- **Design**
 - **Region with subtopics**
 - **States within region -subtopics**

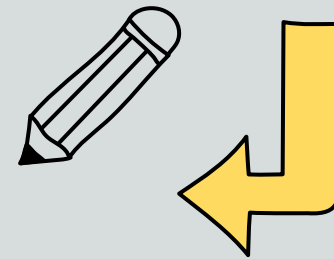




Sample Google Sites

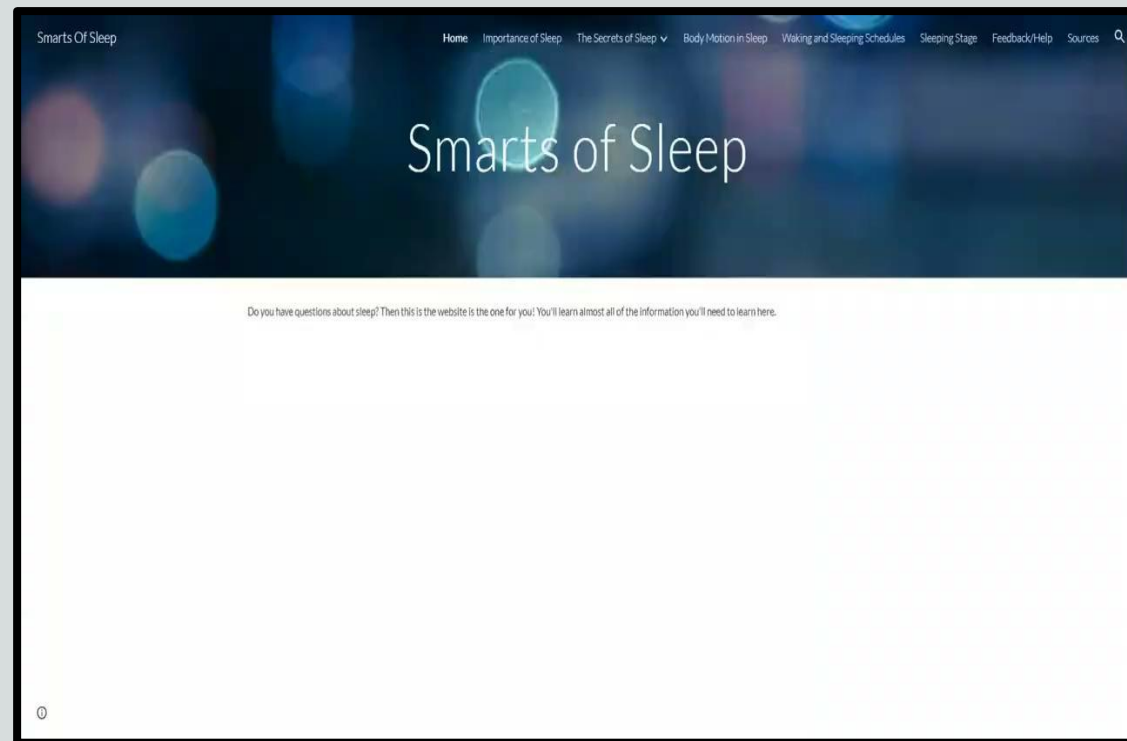
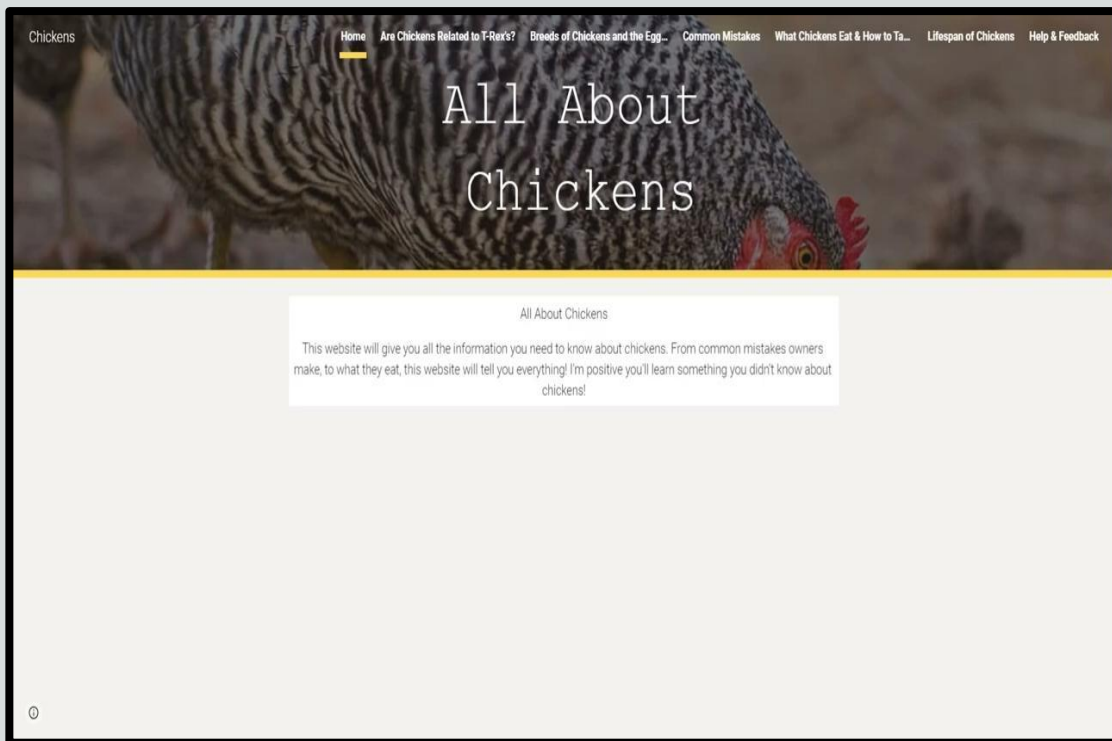
Magic Mailbox





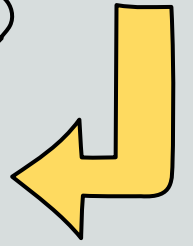
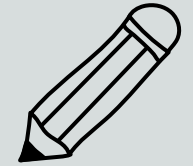
Sample Google Sites

Fifth Grade Genius Hour





Teacher Weekly Newsletter

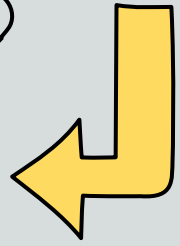
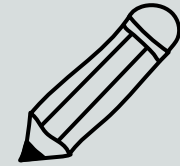


Home Class photos 3rd grade website Important Dates LA Fundations Math

Hello Families,

Math- Unit 7 has begun (multiplication & division) and (fractions)

ELA - book groups.



Research Guides

WebQuests on Steroids



LYME-OLD LYME HIGH SCHOOL LIBRARY

HOME INDEPENDENT READING STUDENT RESOURCES TEACHER RESOURCES HELP & HOW TO

Follett Destiny
Search for Books

The digital library is always open.
OPEN 24 HOURS
Read on Sara
Fiction eBooks



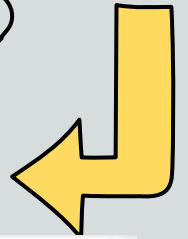
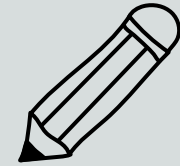
Research Databases

NoodleTools
Research Organization Tool



Research Guides

Bring Collaborations to Life



LYME-OLD LYME HIGH SCHOOL LIBRARY

HOME INDEPENDENT READING STUDENT RESOURCES TEACHER RESOURCES HELP & HOW TO



Search for Books



Fiction eBooks

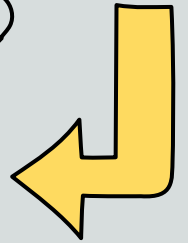
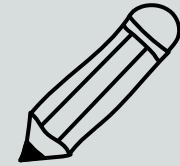


Research Databases



Research Organization Tool





Student Projects

Research Guide, Project Template and Student Exemplars

LOLHS Science Dept. Home Biology Chemistry Physics Electives Q

SCIENCE

RESEARCH GUIDES

Go to Resources for Research

LYME-OLD LYME HIGH SCHOOL LIBRARY

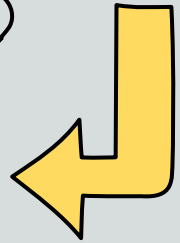
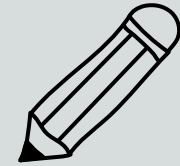
HOME | [INDEPENDENT READING](#) | [STUDENT RESOURCES](#) | [TEACHER RESOURCES](#) | [HELP & HOW TO](#)

NEWS FROM SCIENCE

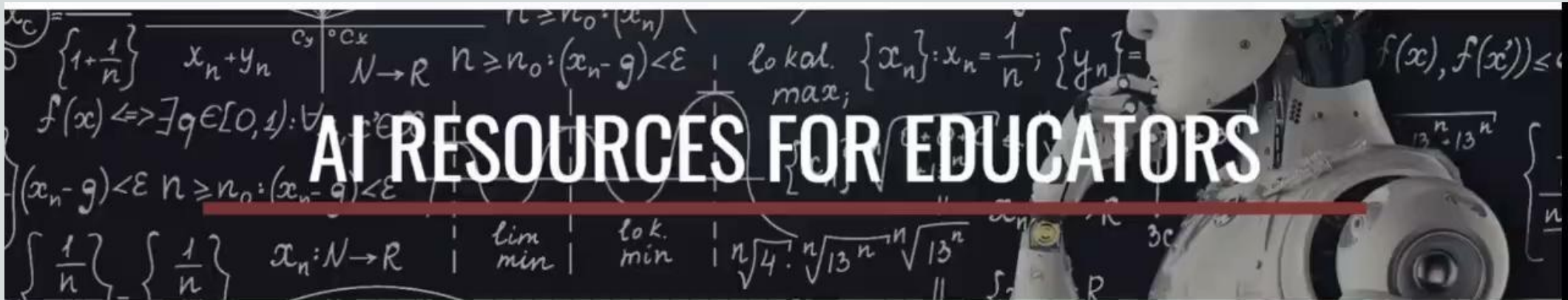




Student and Teacher Resources



One Stop Shopping & Updated Live Content



To Read, Follow & Digest

■ **Guidance for Use:**

- [ChatGPT AI impact on teaching and learning](#) [From **UConn's** Center of Excellence in Teaching and Learning]
- [Guide to ChatGPT for Parents and Caregivers](#) from Common Sense Media
- [What is ChatGPT? What Parents Need to Know About this Popular New App](#)

■ **Articles:**

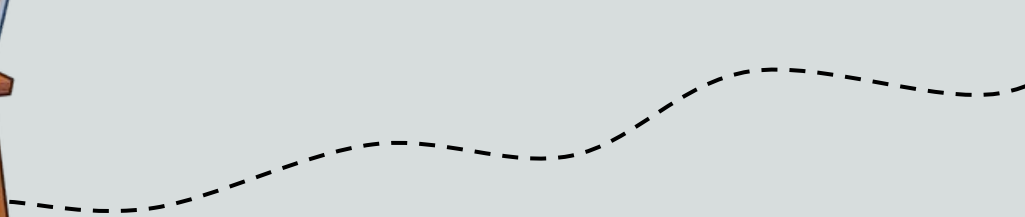
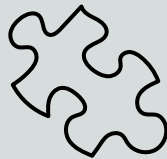
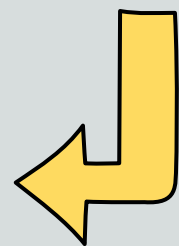


BEEP
BOOP
BEEP





Web Design 101





Scan Me to plan! →

Before You Start...

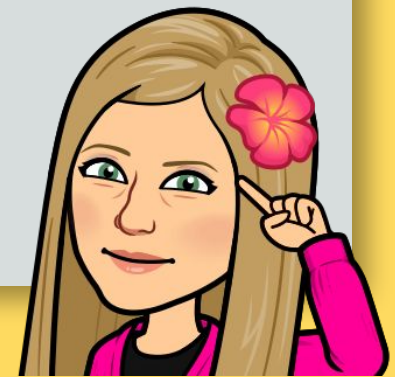
*Remember: People come for the **information**, not the design! Your design is a way to deliver the information!*

INFORMATION first
DESIGN second!

Come up with a [plan](#):

What is the purpose of the site? What will be the topic presented?

Who is your audience?
Build your website with your audience in mind!



Space

The best designs are kept **simple**. They do not squeeze every image and font on the page.

Designers use **open space** to bring attention to what is important!

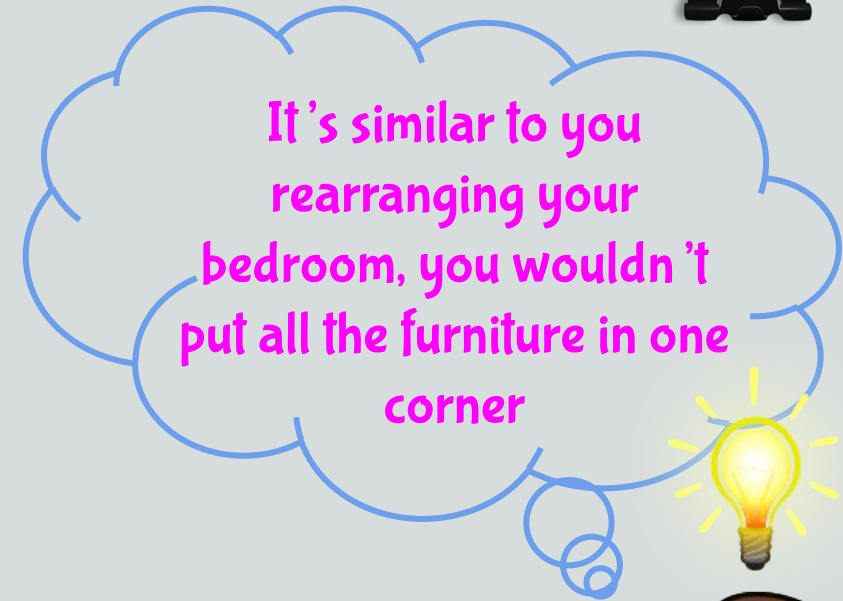


SIMPLE is BEST!

Balance

When it comes to design:

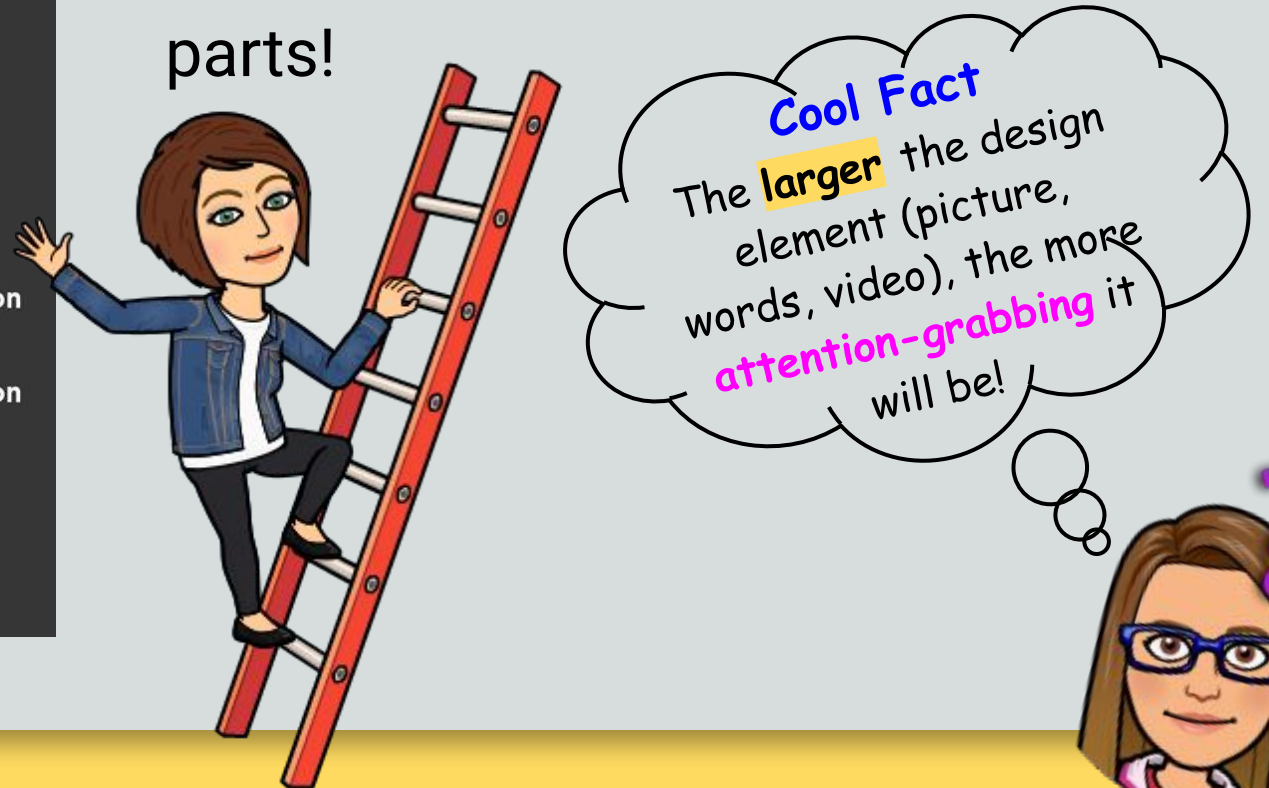
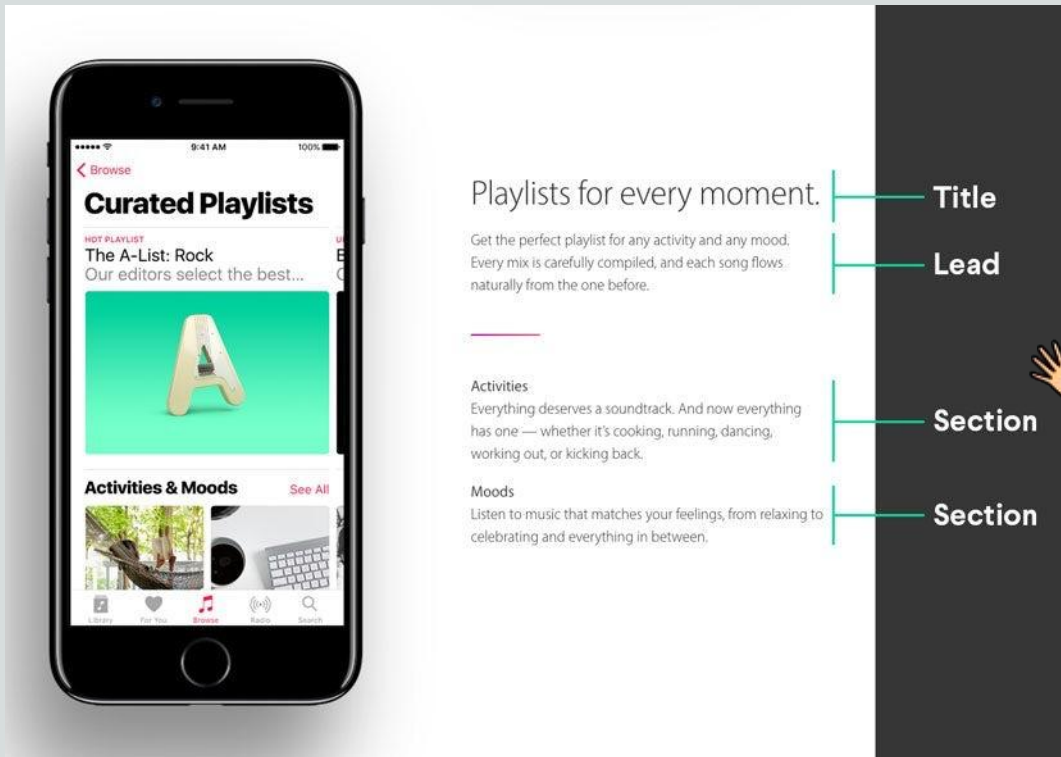
- Be **creative** - but **balanced**.
- Less is more
- White space is key
- Don't overwhelm viewers



Hierarchy

Hierarchy is how you present your information on the page.

Web designers use this strategy to grab viewers attention to important parts!



Color



Color is **powerful**! It attracts viewers and pulls them into your site!

Colors you choose are not only important for the overall beauty of your website, but they also help connect with your audience!



Fonts

Sans serif

Th



Display

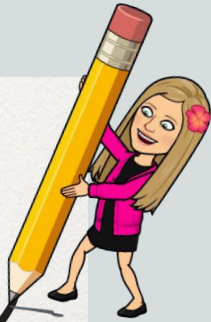
TH

THE QUICK ONYX GOBLIN
JUMPS OVER THE LAZY DWARF.

Script

Th

How quickly daft jumping gbras



Serif

Th

A quick brown fox jumps over the lazy dog.

The words you use in your designs are important, but so are the **Fonts!**

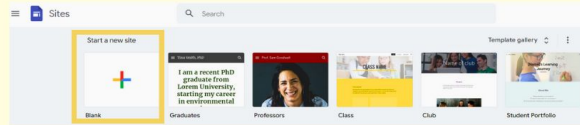
Fonts make your website visually pleasing and grab the attention of your viewer!

HOW TO BUILD A GOOGLE SITE



MAKE A SITE

- Go to sites.google.com
- Click "Blank" to create a site



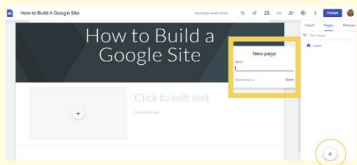
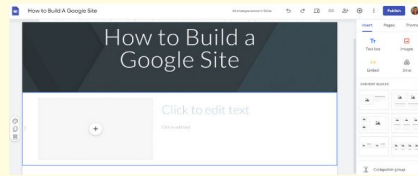
PICK A THEME

- Click "Theme" and choose a theme
- Edit your site Name, Title, and Header Image



INSERT CONTENT

- Click "Insert" and add items to your page
- **TIP:** Scroll down to see all the different options!



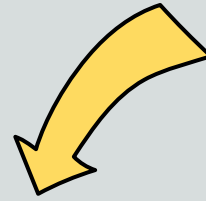
ADD PAGES

- Click "Pages" to manage multiple pages
- Click the "+" at the bottom to add a new page
- **TIP:** Don't forget to type the name of your new page!



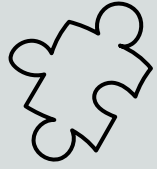
PUBLISH

- When your site is finished, click the "Publish" button. Your Site is now LIVE!
- **TIP:** Any time you make changes to your site, you will need to click "Publish" again!

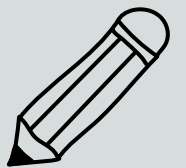
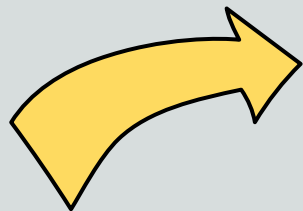


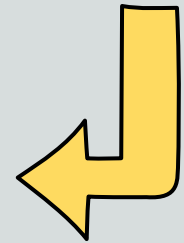
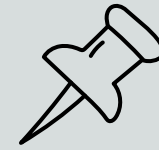
HOW TO





How to Create a Google Site





Let's Construct!



How can I help?



- Open a new tab
- Click on your “waffle”
- Scroll down and locate the image to the right



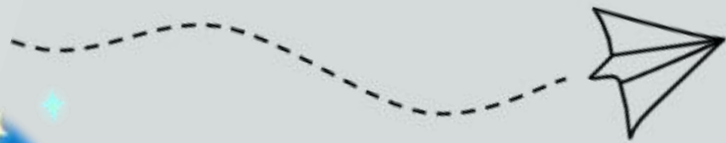
Scan for the slides



More Than One Page?



Customizing Your Design



Publishing Your Site

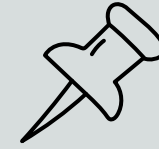
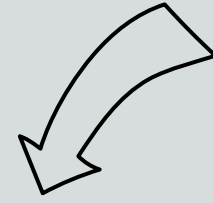
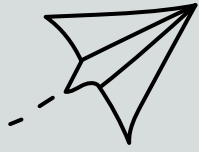


PUBLISH



Other Ideas for Google Sites

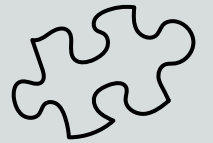




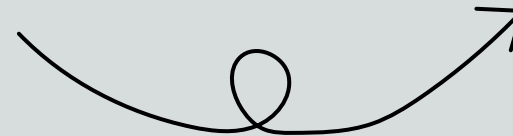
What did you think?

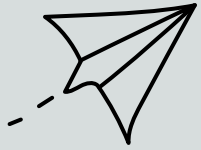
Tell us what you liked and any constructive criticism?

Let us know via this [Google Form](#).



← Scan Me for the Google Form!

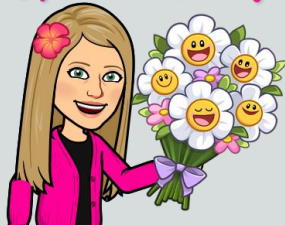




THANK YOU!

DO YOU HAVE ANY QUESTIONS?

THANK YOU!

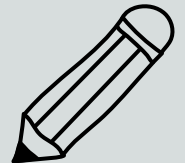


Tiffany Bucko: buckot@region18.org

Many Thanks!



Nila Kaczor: kaczorn@region18.org

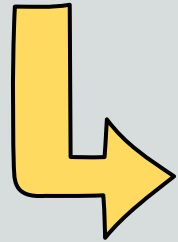


Lucy Trost: trostl@region18.org



CREDITS

[Google Sites Training - Teacher Center](#)



Principles of Good Web Design: <https://uxplanet.org/>

Web Design with Google Sites: [Super Utility Teacher](#)

Web Design Bundle: [Engaging Project-Based Learning](#)

Presentation Template: [SlidesMania](#)

Sample Images: [Unsplash](#)

Fonts used in this presentation: Roboto